



E-SWITCH®

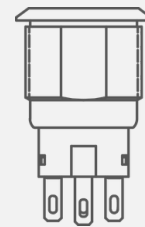
DESIGN SOLUTIONS FOR GROWING INDUSTRIES

Turning Superior Performance into Profit

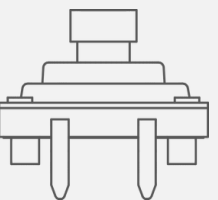
Safer medical devices, smarter industrial systems and better consumer tech.

Highly reliable switches provide strategic value by elevating product performance, reliability and long-term sales.

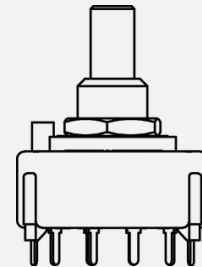
Anti-Vandal



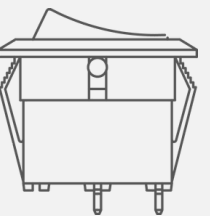
Tactile



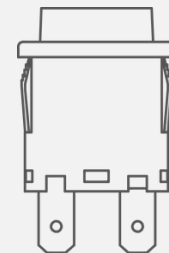
Rotary DIP



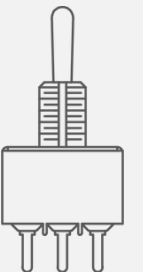
Rocker



Pushbutton



Toggle



e-switch.com

800-867-2717



E-SWITCH®

Medical Market Solutions

E-Switch products are tried and trusted components in the medical market, where they provide precise control, safety and feedback in a wide range of healthcare devices and systems. From hospitals to home care settings, these switches ensure reliable operation in the most critical of environments.



Our Switch Benefits

Features & Applications

Switches provide intuitive, tactile interfaces for healthcare professionals, especially in high-stress environments like operating rooms. They enable accurate control of functions in devices like infusion pumps, ventilators and diagnostic machines, where even the slightest deviations can impact patient care.

- High Reliability
- Precise Control
- Sterile Cleaning
- Illumination Options
- Tactile Feedback
- Custom Cable Assembly
- Long Life Cycles
- Actuator Customization



Contact Us
+800-867-2717



e-switch.com



marketing@e-switch.com

PV SERIES

ANTI-VANDAL

- From 12mm to 40mm panel cutout sizes
- Solder lug, socket or wire leads termination
- Contact Rating: 2A, 36VDC or 2A, 48VDC
- IP65 or IP67 seal ratings
- LED ring, dot or power symbol
- SPST, SPDT or DPDT circuits



ULV SERIES

ANTI-VANDAL

- 19mm, 22mm or 25mm panel cutout
- UL Certified: 3A, 125/250VAC
- SPDT, DPDT; Momentary or latching
- LED ring, dot, power symbol or 40+ custom graphic options
- SPST, SPDT or DPDT circuits
- Solder lug, socket or wire leads termination



CS SERIES

TOUCH SENSOR

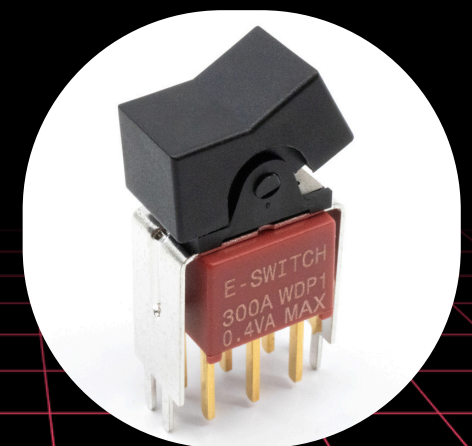
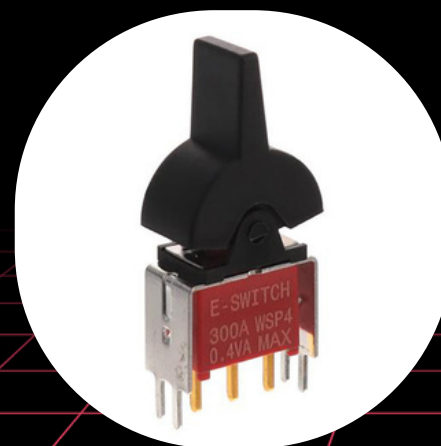
- Capacitive switching technology
- 19mm or 22mm panel cutout size
- Wire leads with connector termination
- Contact Rating: 1A, 5-24VDC
- IP68 seal rating; 50M electrical cycles
- LED ring or ring/power symbol



300A SERIES

MINIATURE ROCKER

- Epoxy sealed to an IP67 rating
- Multiple rocker and paddle options
- Multiple termination options for panel mount and PC mount, including right angle
- SPDT or DPDT contact arrangement
- Silver or gold contact material





E-SWITCH®

Industrial Market Solutions

Switches are foundational components in the industrial market, where they enable precise control, feedback and safety, allowing machines and systems to quickly respond to physical changes or user inputs. They're frequently integrated into control panels and designed to withstand harsh environments.



Our Switch Benefits

Features & Applications

Switches detect the position of moving parts (like robotic arms or conveyor belts) and trigger actions or stop movements when limits are reached. They're used to start, stop or change the state of automated processes in manufacturing, packaging and material handling. They provide real-time feedback to industrial computers and other control systems for decision-making.

- Sealed IP Ratings
- Precise Control
- Termination Styles
- Illumination Options
- Intuitive Designs
- Custom Cable Assembly
- Long Life Cycles
- Safety Mechanisms



Contact Us
+800-867-2717



e-switch.com



marketing@e-switch.com

RP8100 SERIES

PUSHBUTTON

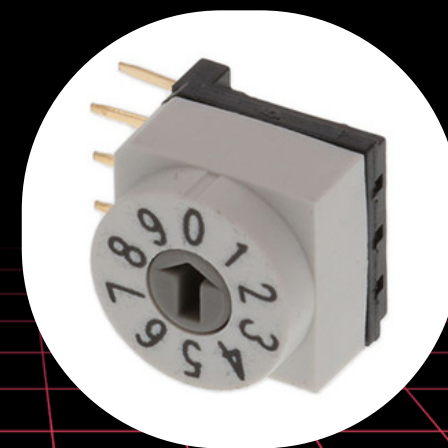
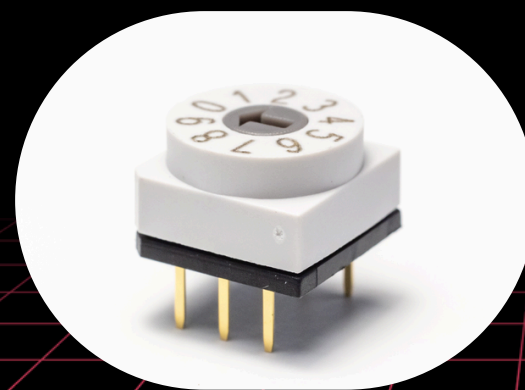
- Threaded or snap-in panel mount
- SPST, momentary function
- LED illumination options
- IP67 rated; 500K cycles
- 125mA @ 125VAC, 100mA @ 50VDC
- Solder lug or molded back with wire leads



RDT SERIES

ROTARY DIP

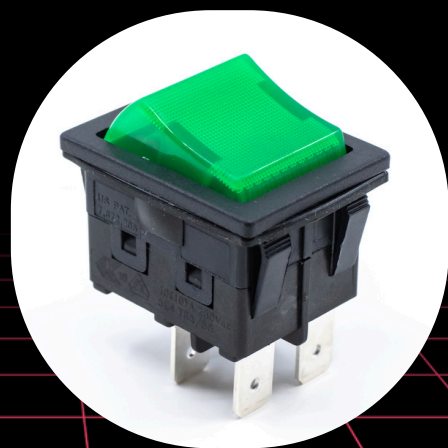
- 19mm, 22mm or 25mm panel cutout
- UL Certified: 3A, 125/250VAC
- SPDT, DPDT; Momentary or latching
- LED ring, dot, power symbol or graphic
- SPST, SPDT or DPDT circuits
- Solder lug, socket or wire leads termination



RBW2 SERIES

ROCKER

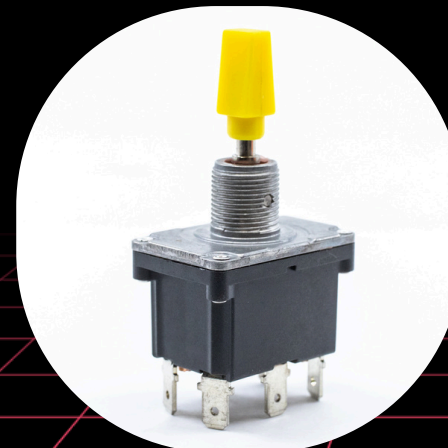
- Industry standard 30mm x 22mm cutout
- IP66 rated against dust and moisture
- Ratings: 16A, 125VAC, 1/3HP (UL, cUL)
 - 10A, 250VAC (VDE)
- DPST or DPDT; Latching function
- Full illumination options available



ST4 SERIES

TOGGLE

- Popular 12mm diameter panel cutout
- Fully sealed IP68 against dust and moisture
- UL Ratings: 16(8)A @ 125/250VAC, μ T55
 - 20(8)A @ 125/250VAC, μ T55
 - 20A @ 6-30VDC, μ T55
- SP or DP; 2 or 3 positions; 9 functions





E-SWITCH®

Consumer Market Solutions

Switches serve as critical components that bridge digital signals with mechanical actions in appliances, wearables and other consumer technologies, ensuring dependable operation across a range of products. They enhance user experience and are designed to withstand frequent use.



Our Switch Benefits

Features & Applications

Switches support feedback and precision in user interfaces, making them indispensable in products where clear tactile confirmation and dependable circuit control are required. They ensure consistent performance in harsh and high-use settings, such as appliances, home maintenance products and personal care/fitness devices.

- Efficient, Reliable
- User-Friendly
- Aesthetic Designs
- Long Life Cycles
- Cost-Effective
- Illumination Options
- Enhanced Durability
- Safety Mechanisms



Contact Us
+800-867-2717



e-switch.com

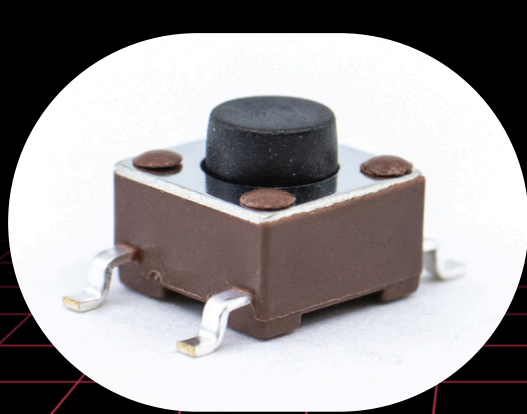


marketing@e-switch.com

TL3301 SERIES

TACTILE

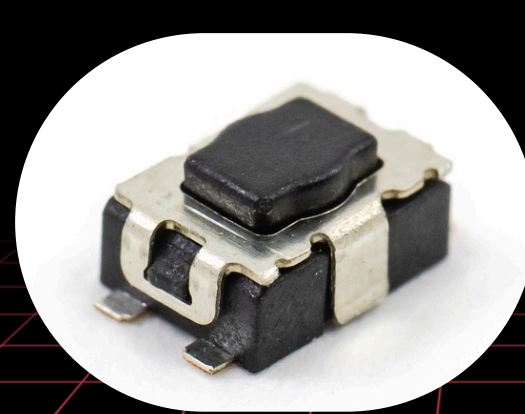
- Surface mount design: Gull wing or J-lead
- 6mm x 6mm outline; 10 actuator heights
- SPST; 3 actuation force options
- Cap varieties can be ordered separately
- Tape and reel packaging
- Silver or gold contacts; 100K-cycle life



TL6330 SERIES

TACTILE

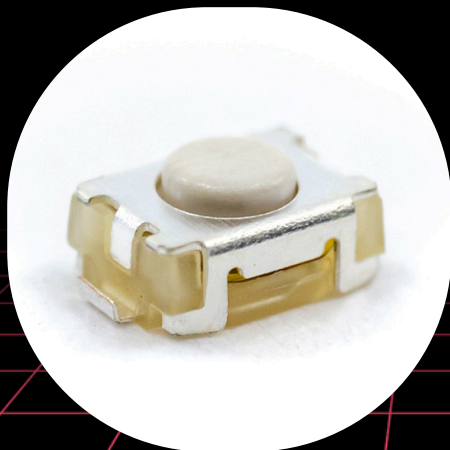
- Sealed to an IP67 rating (washable)
- Surface mount PC board design
- 4.60mm x 2.80mm outline
- 200gf, 300gf or 400gf operating force
- 1.9mm or 2.5mm actuator height
- -40°C to +85°C operating temperature



TL1015 SERIES

TACTILE

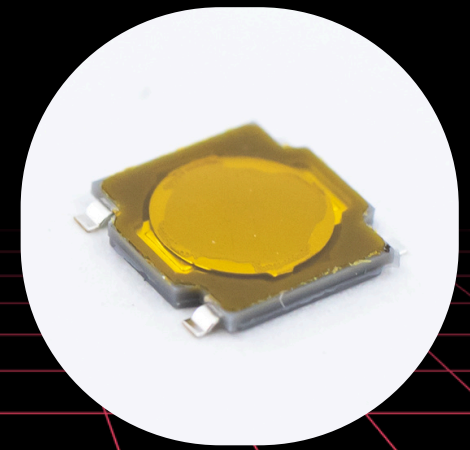
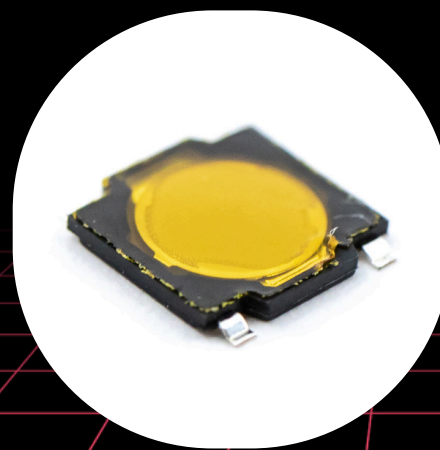
- Ultra-miniature 3.90mm x 2.90mm outline
- Surface mount (SMT) design
- Gull wing termination; mounting boss option
- 160gf or 250gf operating force
- Tape and reel packaging
- Life Expectancy: 200,000 cycles



TL3315 SERIES

TACTILE

- Surface mount (SMT) design; gull wing
- Miniature 4.50mm x 4.50mm outline
- Low profile of only 0.55mm; 0.20mm travel
- 100gf, 160gf or 250gf operating force
- Snap dome actuator for enhanced feel
- Life Expectancy: Up to 1,000,000 cycles





E-SWITCH[®]

ENERGIZING INNOVATION

E-SWITCH.COM

