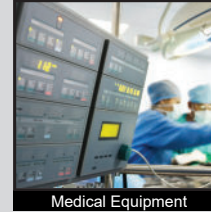
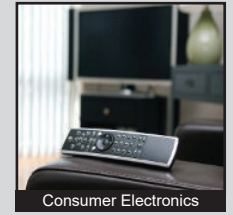
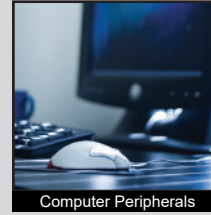
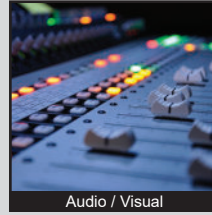


TL3145 SERIES TACT SWITCH

APPLICATIONS / MARKETS



RoHS

SPECIFICATIONS

Electrical Rating: 50mA, 12VDC
Electrical Life: up to 3,000,000 Cycles
Contact Resistance: 100mΩ Max.
Insulation Resistance: 100MΩ Min. at 500VDC
Dielectric Strength: 250VAC for 1 Minute
Operating Temperature: -40°C to 85°C
Operating Force: 180gf ± 50gf (3,000,000 cycles)
 260gf ± 50gf (500,000 cycles)
 350gf ± 80gf (500,000 cycles)
Travel: 0.5mm
Dust/Moisture Protection: IP67
Function: SPST, Off-(On)

FEATURES & BENEFITS

- Up to 3,000,000 cycle life expectancy
- Tape and Reel packaging
- IP67 ratings
- Multiple force options

PART NUMBER CONFIGURATOR

Series <input type="text"/> <input type="text"/> <input type="text"/> <input type="text"/> <input type="text"/> <input type="text"/> TL3145	Actuator <input type="text"/> A - 3.50 B - 5.20	Force <input type="text"/> <input type="text"/> <input type="text"/> <input type="text"/> F180 - 180 gf - White F260 - 260 gf - Red F350 - 350 gf - Orange	Plating <input type="text"/> Q - Silver	Termination <input type="text"/> J - J Lead
--	---	---	--	--

Specifications subject to change without notice 4.2.2024



E-SWITCH®

www.e-switch.com

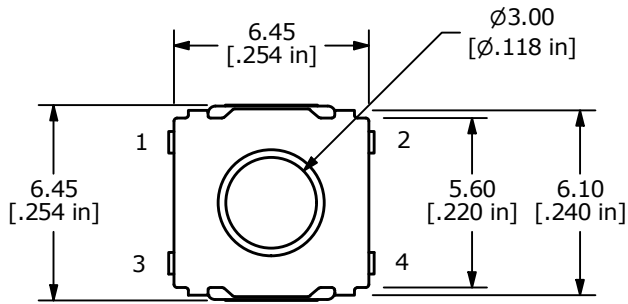
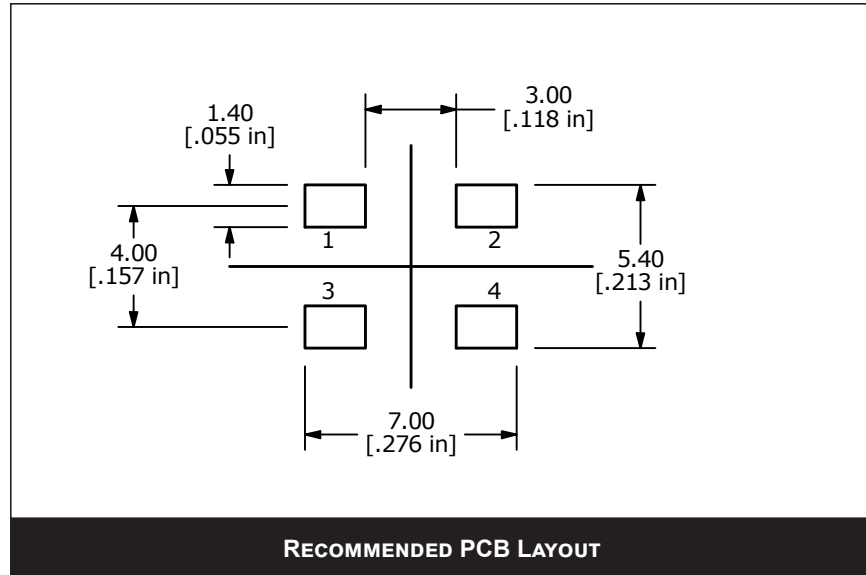
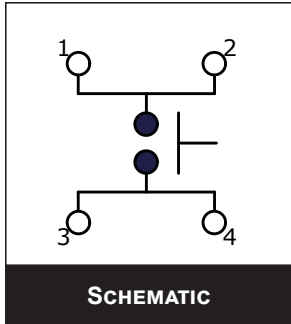
800.867.2717

1

ANTI-VANDAL SWITCHES
 DETECTOR SWITCHES
 DIP SWITCHES
 KEYLOCK SWITCHES
 NAVIGATION SWITCHES
 PUSHBUTTON SWITCHES
 ROCKER SWITCHES
 ROTARY SWITCHES
 SLIDE SWITCHES
 SNAP ACTION SWITCHES
 TACTILE SWITCHES
 TOGGLE SWITCHES
 CAP OPTIONS

TL3145 SERIES TACT SWITCH

BODY DIMENSIONS



ACTUATOR	"X"
A	3.50
B	5.20

