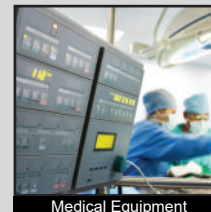
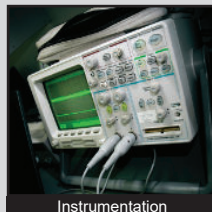
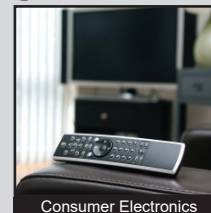
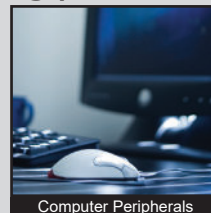
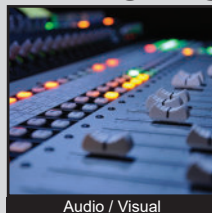


KAG SERIES DIP SWITCH

ANTI-VANDAL SWITCHES
 DETECTOR SWITCHES
DIP SWITCHES
 KEYLOCK SWITCHES
 NAVIGATION SWITCHES
 PUSHBUTTON SWITCHES
 ROCKER SWITCHES
 ROTARY SWITCHES
 SLIDE SWITCHES
 SNAP ACTION SWITCHES
 TACTILE SWITCHES
 TOGGLE SWITCHES
 CAP OPTIONS



APPLICATIONS / MARKETS



RoHS

SPECIFICATIONS

Electrical Rating: 100mA @ 50VDC Non-Switching
 25mA @ 24VDC Switching
Life Expectancy: 1,000 Cycles each circuit
Contact Resistance: 50mΩ Max.
Insulation Resistance: 100 MΩ Min. at 500VDC
Dielectric Strength: 500VAC for 1 min.
Operating Temperature: -40°C to 105°C
Storage Temperature: -40°C to 105°C
Travel: 0.9mm in each direction
Contact Arrangement: SPDT each position

FEATURES & BENEFITS

- Gullwing (SMT) termination option
- Tube or Tape & Reel packaging options
- Top tape seal option with recessed actuator
- Low profile
- 1,2,3,4,5,6,7,8,9,10,11 or 12 positions
- Gold contacts
- Switches are supplied with all poles in "OFF" position

PART NUMBER CONFIGURATOR

Series	No. of Positions	Actuator	Termination	Contact Material	Packaging
<input type="text" value="KAG"/>	<input type="text" value="01"/> 01 - 1 position 02 - 2 positions 03 - 3 positions 04 - 4 positions 05 - 5 positions 06 - 6 positions 07 - 7 positions 08 - 8 positions 09 - 9 positions 10 - 10 positions 11 - 11 positions 12 - 12 positions	<input type="text" value="L"/> L - Extended S - Recessed without top tape seal T - Recessed with top tape seal	<input type="text" value="G"/> G - Gullwing	<input type="text" value="G"/> G - Gold	<input type="text" value="T"/> T - Tube R - Tape & Reel (Gullwing only)

Specifications subject to change without notice 10.5.2023



E-SWITCH®

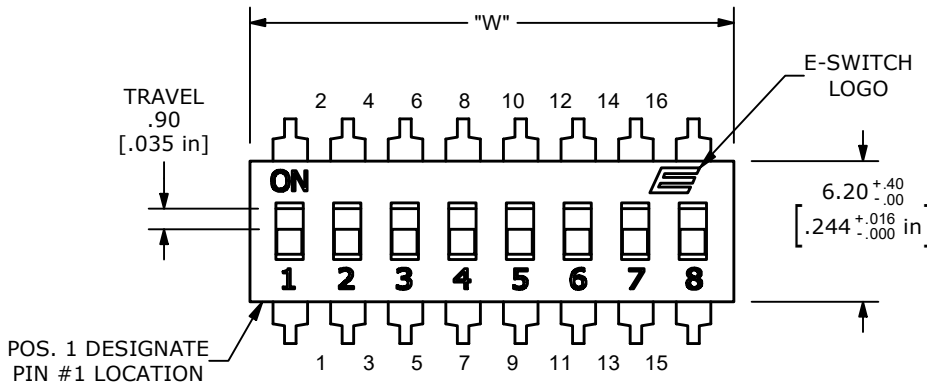
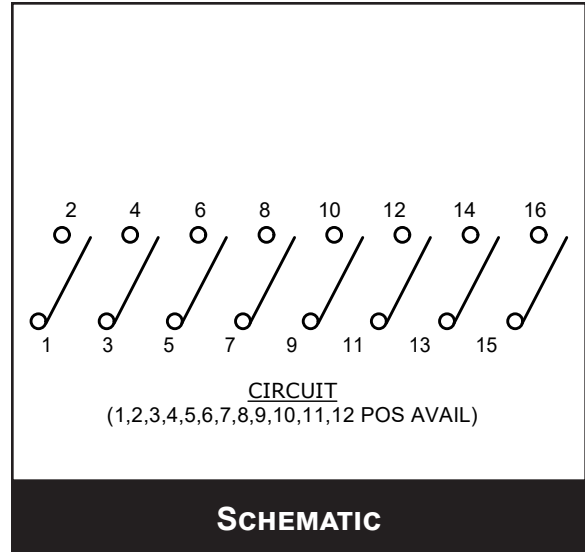
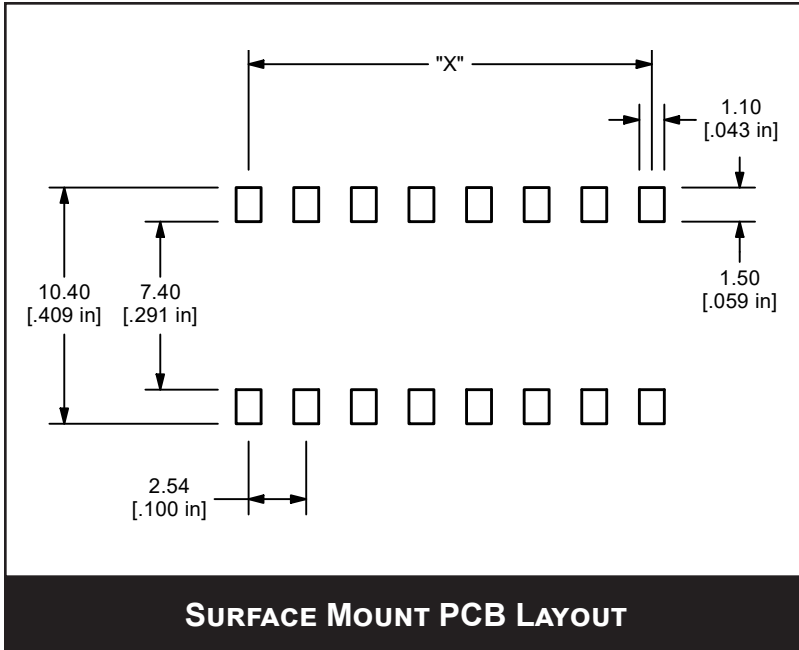
www.e-switch.com

800.867.2717

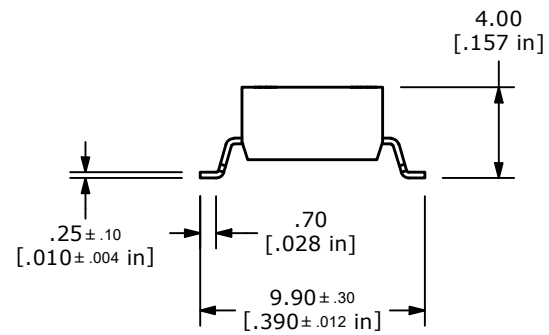
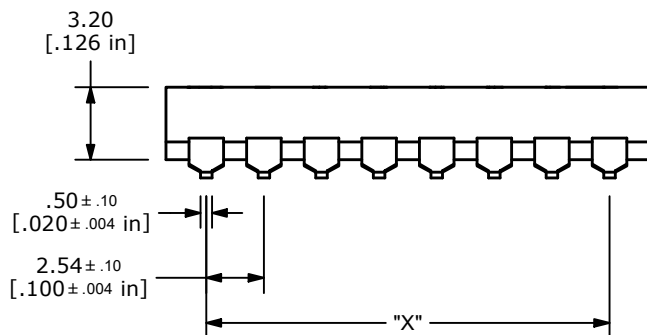
1

KAG SERIES DIP SWITCH

BODY DIMENSIONS GULLWING TERMINATION



NO. OF POS	DIM W	DIM X
1	3.54	N/A
2	6.08	2.54
3	8.62	5.08
4	11.16	7.62
5	13.70	10.16
6	16.24	12.70
7	18.78	15.24
8	21.32	17.78
9	23.86	20.32
10	26.40	22.86
11	28.94	25.40
12	31.48	27.94



ANTI-VANDAL SWITCHES
DETECTOR SWITCHES
DIP SWITCHES
KEYLOCK SWITCHES
NAVIGATION SWITCHES
PUSHBUTTON SWITCHES
ROCKER SWITCHES
ROTARY SWITCHES
SLIDE SWITCHES
SNAP ACTION SWITCHES
TACTILE SWITCHES
TOGGLE SWITCHES
CAP OPTIONS