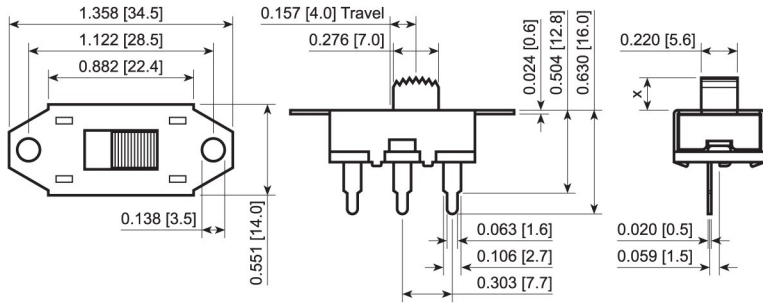
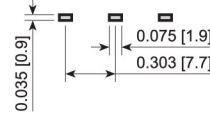


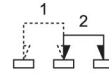
LSU11-120001Ax (x for Actuator Length)



Suggested PCB Layout



Electrical Schematic



FEATURES:

- PC Board and Solder Terminal Options
- RoHS and Lead-Free Compliant
- Customizable Actuator Height

SPECIFICATIONS:

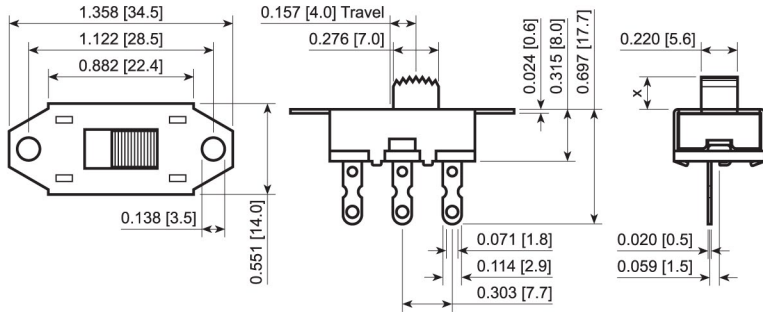
RATING: 11A 125VAC
5.5A 250VAC

ELECTRICAL LIFE: 10,000 Cycles
CONTACT RESISTANCE: 30mΩ Max.
INSULATION RESISTANCE: 500MΩ Min. at 500VDC
DIELECTRIC STRENGTH: 500VAC for 1 Minute

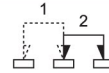
MATERIALS:

Body: Steel
ACTUATOR: Polyphenylene Oxide
BASE: Phenolic Board, UL94 V-0
CONTACTS: Silver Alloy
TERMINALS: Silver Plated Copper

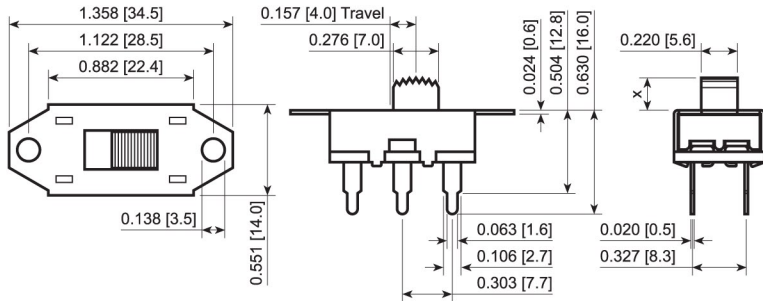
LSU11-120002Ax (x for Actuator Length)



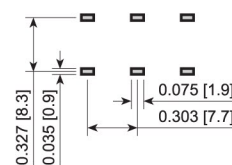
Electrical Schematic



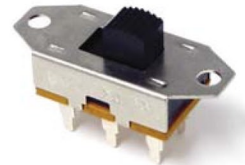
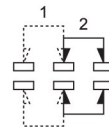
LSU11-220001Ax (x for Actuator Length)



Suggested PCB Layout

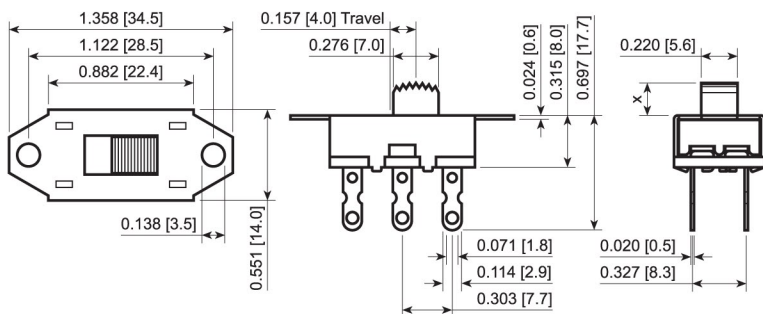


Electrical Schematic

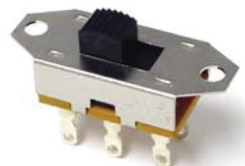
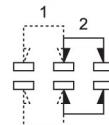


LSU11-220001A7

LSU11-220002Ax (x for Actuator Length)



Electrical Schematic



LSU11-220002A5

Series	Number of Poles / Positions	Model	Terminal Type	Actuator Type	Actuator Height
LSU11 - 11A, Vertical Knob	12 - 1 Pole, On-On 22 - 2 Pole, On-On	000 - 22.4 x 14.0, Unthreaded 001 - 22.4 x 14.0, Threaded	1 - PCB Pin 2 - Solder	A - Rounded Rridged	9 - 9mm (Standard) X - Varies From 2 to 20

EXAMPLE PART NUMBERS:

- LSU11-120001A9 1P2T On-On
Model 000, PCB Pins, 9.0mm Actuator
- LSU11-120002A9 1P2T On-On
Model 000, Solder, 9.0mm Actuator
- LSU11-220001A9 2P2T On-On
Model 000, PCB Pins, 9.0mm Actuator
- LSU11-220002A9 2P2T On-On
Model 000, Solder, 9.0mm Actuator