

EG1312 SERIES SLIDE SWITCH

ANTI-VANDAL SWITCHES

DETECTOR SWITCHES

DIP SWITCHES

KEYLOCK SWITCHES

NAVIGATION SWITCHES

PUSHBUTTON SWITCHES

ROCKER SWITCHES

ROTARY SWITCHES

SLIDE SWITCHES

SNAP ACTION SWITCHES

TACTILE SWITCHES

TOGGLE SWITCHES

CAP OPTIONS



APPLICATIONS / MARKETS



Handheld Devices



Wearable Electronics



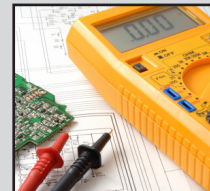
Internet of Things



Smart Home



Telecommunication



Testing Equipment

RoHS

SPECIFICATIONS

Contact Rating: 30mA @ 15VDC
Electrical Life: 5,000 cycles Min.
Contact Resistance: 1Ω Max.
Insulation Resistance: 1MΩ Min @ 250VDC
Dielectric Strength: 100VAC
Operating Temperature: -10°C to 60°C
Storage Temperature: -25°C to 85°C
Travel: 1.50mm from each position to the next position
Contact Arrangement: SP3T
Actuation Force: 150gF

FEATURES & BENEFITS

- Surface mount PC board design
- 1.50mm travel
- Compact design
- SP3T function

PART NUMBER CONFIGURATOR

Series



EG1312

Actuator
Option



A - 1.00mm

Momentary
Position



R - Right Side

Specifications subject to change without notice 7.20.2020



E-SWITCH®

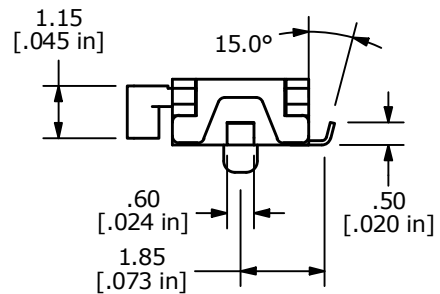
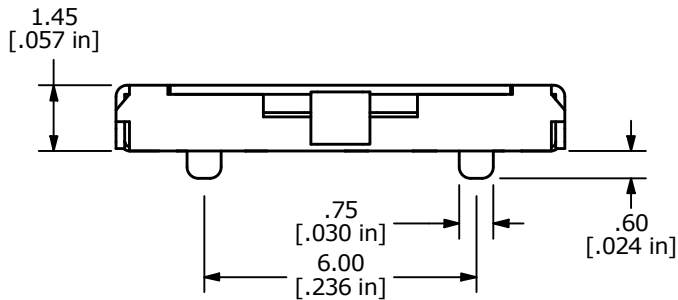
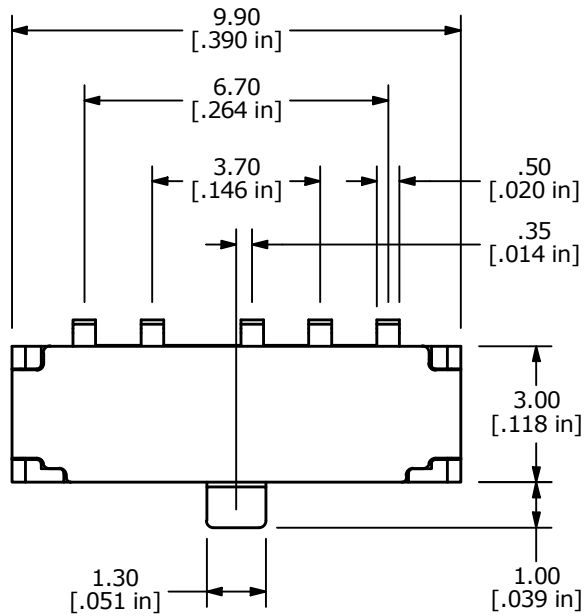
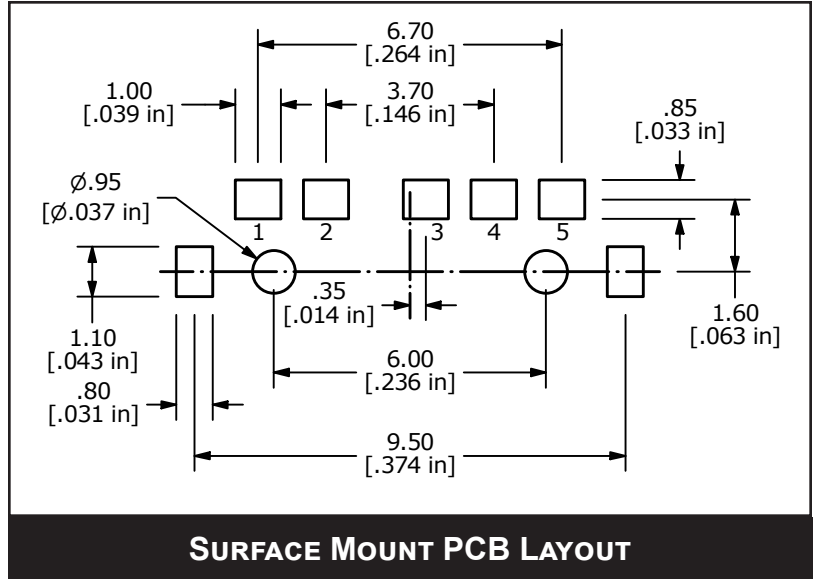
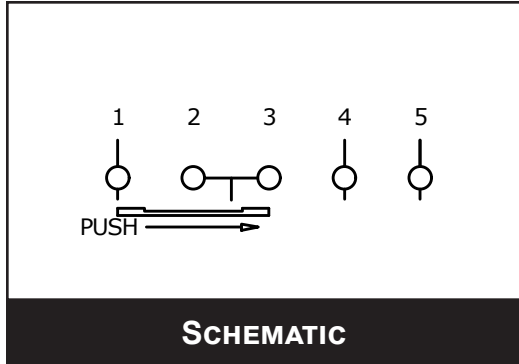
www.e-switch.com

800.867.2717

1

EG1312 SERIES SLIDE SWITCH

BODY DIMENSIONS



ANTI-VANDAL SWITCHES
 DETECTOR SWITCHES
 DIP SWITCHES
 KEYLOCK SWITCHES
 NAVIGATION SWITCHES
 PUSHBUTTON SWITCHES
 ROCKER SWITCHES
 ROTARY SWITCHES
 SLIDE SWITCHES
 SNAP ACTION SWITCHES
 TACTILE SWITCHES
 TOGGLE SWITCHES
 CAP OPTIONS